

Shekhawati Engineering College, Dundlod

Mandatory Disclosure

| Mandatory Disclosure | : | Updated on |
|---|----------|--|
| 1. AICTE File No. | : | 06/04/raj/engg/2003/007 |
| Date & Period of Last Approval | : | 23.08.2010, One Year |
| 2. Name of the Institution | : | Shekhawati Engineering College, Dundlod |
| Address of the Institution | : | Near Dundlod Railway Phatak, P.O. Dundlod , District-Jhunjhunu (Rajasthan), 333702 (Location map is attached as attachment No.-1) |
| City & Pin Code | : | Village- Dundlod, Pin- 333702 |
| State / UT | : | Rajasthan |
| Longitude & Latitude | : | 27°52'53.93"N (Latitude) 75°14'4.21"E (Longitude) |
| Phone number with STD code | : | 01594-225375, 223621 |
| Fax no. with STD code | : | 01594-225721 |
| Office hours at the Institution | : | 8:30 am – 6:00 pm |
| Academic hours | : | 7:00 am-3:00 pm (I Shift Working) 1:00 pm-9.00 pm (II Shift Working) |
| Email | : | info@shekhawatienggcollege.com |
| Website | : | www.secd.ac.in |
| Nearest Railway Station (Dist in Km) | : | Nawalgarh (5 Km) |
| Nearest Airport (dist in Km) | : | Jaipur (150 Km) |

3. Type of Institution : Private-Self Financed
Category (1) of the Institution : Non- Minority
Category (2) of the Institution : Co-Ed
4. Name of the Organization : Satwic Jeevan Shala Trust ,Dundlod
Running the Institution
Type of Organization : Trust
Address of the Organization : Near Dundlod Railway Phatak, P.O.
Dundlod District-Jhunjhunu
(Rajasthan), 333702

Registered with : Office of the Assistant commissioner
Devsthan Vibhag, Jaipur
Registration Date : 18/07/2003
Website of the Organization : www.secd.ac.in
5. Name of the Affiliating University : Rajasthan Technical University ,Kota
Address : Akelgarh, Rawatbhata Road, Kota-
302040 (Rajasthan)
Website : www.rtu.ac.in
Latest Affiliation Period : 1 Year (2010-11)
6. Name of Principal /Director : Dr.Kirti Kumar Dhawan
Exact Designation : Principal
Phone number with STD code : 01594-225375, 223671
Fax no. with STD code : 01594-225721
Email : info@shekhawatienggcollege.com
Highest Degree : Ph.D.
Field of Specialization : Electrical Engineering

7. Governing Board Members

The governing Board of the College consists of 14 members; the details of them are given in the following table.

BOARD OF GOVERNERS

| S.No. | Name and address | Designation |
|-------|---|------------------------|
| 1 | Shri Shish Ram Ranwa,121- K- 5 Scheme,Khati pura Road,Jaipur | Chairman |
| 2 | Shri Dinesh Ranwa,121- K- 5 Scheme,Khati pura Road,Jaipur | secretary |
| 3 | Smt.Jheema Devi,121- K- 5 Scheme,Khati pura Road,Jaipur | Member |
| 4 | Shri Surja Ram meel, Chairman,Swami Keshwanand Institute of Technology , Jaipur | Member |
| 5 | Justice Chhatra ram Jat (Retd. High Court Judge) , A-213 , Dashrath Marg,Hanuman Nagar , Jaipur (Raj.) | Member |
| 6 | Ms. Pushpanjali Choudhary,Director,Satwic Jeevanshal Trust,Dundlod | Member |
| 7 | Dr.K.K.Dhawan,Principal Shekhawati Engg. College Dundlod | Member Secretary |
| 8 | Dr.Ram singh,Principal , shekhawati Girls engg. College,Dundlod | Member |
| 9 | Regional officer,North- West Regional Office,AICTE,Chandigarh | AICTE Nominee |
| 10 | Prof.Dr.D.R.Jat,Dept. of EAFM,University Commerce College,Jaipue | University Nominee |
| 11 | Director,Dept.of Tech. Education,Jaipur | State Govt.Nominee |
| 12 | Dr.Ghasi Ram Verma,Professor of Mathematics,Ohiyo State University | Member |
| 13 | Dr.K.D.Yadav,Professor , shekhawati Engg. College , Dundlod | Faculty Representative |
| 14 | Shri H. P. Agrawal,Associate Prof.,Deptt. Of EE, Shekhawati Engg. College, dundlod | Faculty Representative |

Frequency of the meetings:

The Board of Governor, as far as practicable, meets once in every sixth months and the last Meeting of the governing body was held on 23 December 2010.

8. Academic Advisory Body:

The Academic Advisory Body consists of following members.

| | | |
|----|--|------------------|
| 1. | Chairman Satwic Jeevashal Trust | Chairman |
| 2. | Principal, Shekhawati Engineering College, Dundlod | Member Secretary |
| 3. | Executive Director, Shekhawati Engineering College | Member |
| 4. | Director, Shekhawati Engineering College | Member |
| 5. | Four Heads of Dept. nominated by Chairman | Member |
| 6. | Administration Officer | Member |
| 7. | Account Officer/Deputy Registrar | Member |

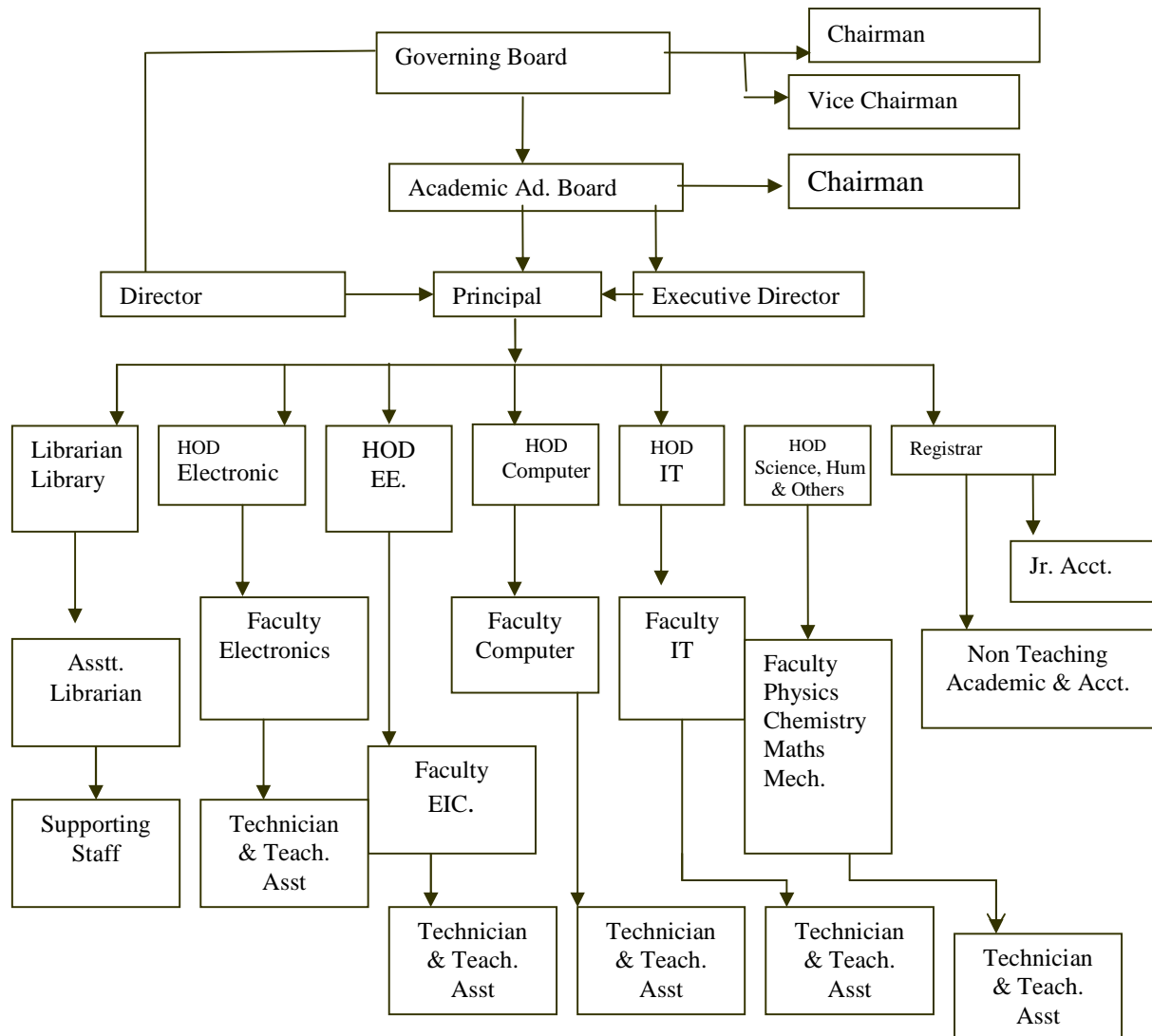
Objective of the Body:

The objective of Executive council is to execute the policy and broad guide lines framed by Governing Council.

Frequency of the meetings:

The Board of Governor, as far as practicable, meets once in every year and the meeting of an Executive council is held once in every 4 months. The last meeting was held on 22 / 12 /2010.

9. Organizational Chart:



Nature and Extent of Involvement of faculty and student in academic affairs/improvement

All the faculties of the college are fully committed to impart instructions to best of their ability. The full coverage of course curriculum prescribed by the University is carried out in class itself. In order to ensure the full strength in the class, the student who are absent in more than 25% total held classes are detained from University Examination. Students are required to take prior permission for any leave by Proctor/CCAA.

In each semester, students are required to appear in two mid term tests which ensure the continuous study throughout the session.

Substitute arrangements are made for the vacant classes due to leave/absence of faculty to ensure full engagement of classes.

Mechanism/Norm & Procedure democratic for good governance

In order to ensure the democratic governance of the college the major policy and broad guidelines are framed by the Board of governor (Governing Council) which consists of more than 9 members where the decisions are taken by majority.

These guidelines and policies are further executed again by Academic Advisory Board consisting of 7 members.

The Executive Council is chaired by the Principal Secretary, Govt. of Rajasthan, Jaipur.

However the faculty members (HOD) and Registrar representing the teaching and non teaching employees of the institute participate in the Executive council, which ensure the effective representation of them to express their views and decisions are taken by majority. Each agenda item of the meeting is discussed at length where all members are provided opportunity to express their views in the Executive councils with regards to implementation of the policy which gives them a sense of feeling of belongingness to organization and ensure commitment towards organization.

10. Student Feedback mechanism on Institutional Governance/Faculty Performance.

In order to know the feedback on institutional governance, the HOD concerned and faculty discuss with the students about the working of the institute, the areas of improvement & weaknesses. The views of the students are communicated to the Principal who discuss the same with the HOD's concerned staff and then efforts are made to introduce the improvements in the interest of institute as a whole & students in particular.

The Principal and HOD's concerned take the feedback about the syllabus covered in the classes, understanding of the subject being taught in the class by the faculty. Accordingly improvements are made in the imparting of instructions through assigning subject to faculty as per their strength, motivating them to make thorough study of the subject and improving the way of delivery by making it more interesting and easy approach.

11. GRIEVANCE REDRESSAL MECHANISM FOR FACULTY, STAFF AND STUDENTS

In the institution conducive environment has been created wherein faculty, staff and students can express their grievances freely. The faculty is free to discuss their grievance with the Principal from time to time. The Principal of the institution takes care of their grievance. The efforts are made to redress the grievance by taking appropriate measures.

The faculty and staff may also interact with the Chairman Executive Council. For students, a complaint box is kept in the Principal Secretariat where in the aggrieved students may drop their grievance which are kept before Principal who tries to redress it himself by taking appropriate measure or referring to Dept. / Section/Concerned.

In addition to this, for each group of student of 15-20, a tutor has been appointed and assigned them task of having a discussion with students concerned with regard to problem being faced inside and outside campus. These problems are discussed with HOD and Principal and appropriate actions are taken accordingly to resolve them.

12. Departments

I SHIFT

| | | |
|---|-------------|--------------------------------|
| (A) Name of the department | - | Computer Science & Engineering |
| Course | - | Engineering & Technology |
| Level- UG/PG | - | UG |
| 1 st Year Approval by AICTE- | - | 2003 |
| Shift | - | First |
| Year wise Sanctioned Intake- | CAY - 120 | CAY_1- 120 |
| CAY_2-120 | | |
| Year wise Actual admissions*- | CAY - 24 | CAY_1 -113 |
| CAY_2-129* | | |
| Cut off marks – General Quota- | CAY -45.69% | CAY_1 -50.67% |
| CAY_2-54.8% | | |
| % students passed with Distinction- | CAY- 74.35% | CAY_1-78.12% |
| CAY_2-83.34% | | |
| % Students passed with 1 st Class- | CAY -95.35% | CAY_1-96.87% |
| CAY_2-100% | | |
| Students placed- | CAY -11 | CAY_1-02 |
| CAY_2-09 | | |
| Average Pay Packagers’/Year- | CAY-4.2lacs | CAY_1 -3.6lacs |
| CAY_2-2.8lacs | | |

| | | |
|---|--|---|
| Students Opted for Higher Studies- CAY_2-6 | CAY--16 | CAY_1-11 |
| Accreditation Status of the Course | - | Not Accredited |
| Doctoral Courses | - | No |
| Foreign Collaborations, if any | - | No |
| Professional Society Memberships Chapter) | - | Member if ISTE (student |
| Professional Activities - in the field of | Work shop, paper presentation and seminar on recent advancement Computer Science & Engg. Are organized by the Department during the entire | Academic session |
| Consultancy Activities - provided by the | Carrier Consultancy Services to Departmental Students are being Academic Experts of various Institutes of India. | |
| Grants fetched- | - | Nil |
| Departmental Achievements - Excellence and a | Computer Department is distinguished as IBM center of MOU has been signed Between IBM & College for Training of IBM tools to | The students by the Expert members from IBM |
| Distinguished Alumni | - | IBM Center of Excellence |

***- Actual admissions including the students admitted under TFWS quota.**

CAY- current Academic year

| (B) Name of the department | - | Information |
|---|--------------|--------------------|
| Technology Course | - | - |
| Engineering & Technology | | |
| Level | - | UG |
| 1 st Year Approval by AICTE- | - | 2003 |
| Shift | - | First |
| Year wise Sanctioned Intake- | CAY - 60 | CAY_1- 60 |
| CAY_2-60 | | |
| Year wise Actual admissions*- | CAY - 00 | CAY_1-52 |
| CAY_2-66 | | |
| Cut off marks – General Quota- | CAY - | CAY_- 53.5% |
| CAY_51.23% | | |
| % students passed with Distinction- | CAY-90.25% | CAY_1-83.33% |
| CAY_2-100% | | |
| % Students passed with 1 st Class- | CAY-92% | CAY_1-91.67% |
| CAY_2-100% | | |
| Students placed- | CAY_7 | CAY_1-3 |
| CAY_2-3 | | |
| Average Pay Package,Rs/Year- | CAY-2.6 lacs | CAY_1-2.2 lacs |
| CAY_2-3.2lacs | | |

| | | |
|---|-------|-------------------------|
| Students Opted for Higher Studies- CAY_2-5 | CAY-8 | CAY_1-4 |
| Accreditation Status of the Course | - | Not Accredited |
| Doctoral Courses | - | No |
| Foreign Collaborations, if any | - | No |
| Professional Society Memberships: Chapter) | - | Member if ISTE (student |

Professional Activities : Work shop, paper presentation and seminar on recent advancement in the Field of Information Technology are organized by the Department During the entire academic session

Consultancy Activities : Carrier Consultancy Services to Departmental Students are being Provided by the Academic Experts of various Institutes of India.

Grants fetched : --

Departmental Achievements : --

Distinguished Alumni : --

***- Actual admissions including the students admitted under TFWS quota.**

CAY- current Academic year

| | | |
|--|--------------|--|
| (C) Name of the department | - | Electronics & Communication Engg. |
| Course | - | Engineering & Technology |
| Level | - | UG |
| 1 st Year Approval by AICTE | - | 2003 |
| Shift | - | First |
| Year wise Sanctioned Intake- CAY_2-90 | CAY - 90 | CAY_1- 90 |
| Year wise Actual admissions*- CAY_2-99 | CAY - 71 | CAY_1-99 |
| Cut off marks – General Quota- CAY_52.0% | CAY -50.25% | CAY_- 51.35% |
| % students passed with Distinction- CAY_2-30% | CAY-82.5% | CAY_1-79.03% |
| % Students passed with 1 st Class- CAY_2-30% | CAY- 80% | CAY_1-76.74% |
| Students placed- CAY_2-9 | CAY_7 | CAY_1-2 |
| Average Pay Package,Rs/Year- CAY_2-1.1 8lacs | CAY-2.8 lacs | CAY_1-2.5 lacs |

Students Opted for Higher Studies-

CAY-2

CAY_1-6

CAY_2-2

Accreditation Status of the Course - Not Accredited

Doctoral Courses - No

Foreign Collaborations, if any - --

Professional Society Memberships- Member if ISTE (student Chapter)

Professional Activities - Work shop, paper presentation and seminar on recent advancement in

The field of Electronics & Communication Engg. Are organized by

The Department during the entire academic session.

Consultancy Activities - Carrier Consultancy Services to Departmental Students are being

Provided by the Academic Experts of various Institutes of India.

Grants fetched : --

Departmental Achievements : --

Distinguished Alumni : --

***- Actual admissions including the students admitted under TFWS quota.**

CAY- current Academic year

| | | |
|---|--------------|-------------------|
| (D) Name of the department | - | Electrical |
| Engineering | | |
| Course | - | Engineering & |
| Technology | | |
| Level- | | - |
| UG | | |
| 1 st Year Approval by AICTE- | - | 2003 |
| Shift | - | First |
| Year wise Sanctioned Intake- | CAY - 90 | CAY_1- 90 |
| CAY_2-90 | | |
| Year wise Actual admissions*- | CAY - 97 | CAY_1-96 |
| CAY_2-90 | | |
| Cut off marks – General Quota- | CAY -51.48% | CAY_- 50.76% |
| CAY_56.0% | | |
| % students passed with Distinction- | CAY-68% | CAY_1-46.67% |
| CAY_2-70% | | |
| % Students passed with 1 st Class- | CAY-78.57% | CAY_1-93.33% |
| CAY_2-80% | | |
| Students placed- | CAY_16 | CAY_1-4 |
| CAY_2-11 | | |
| Average Pay Package,Rs/Year- | CAY-2.8 lacs | CAY_1-2.4 lacs |
| CAY_2-2.0 lacs | | |

Students Opted for Higher Studies-

CAY-6

CAY_1-13

CAY_2-3

Accreditation Status of the Course - Not Accredited

Doctoral Courses - No

Foreign Collaborations, if any - --

Professional Society Memberships - Member if ISTE (student Chapter)

Professional Activities - Work shop, paper presentation and seminar on recent advancement in the

Field of Electrical Engg. Are organized by the

Department during the

Entire academic session.

Consultancy Activities - Carrier Consultancy Services to Departmental Students are being

Provided by the Academic Experts of various Institutes of

India.

Grants fetched : --

Departmental Achievements : --

Distinguished Alumni : --

***- Actual admissions including the students admitted under TFWS quota.**

CAY- current Academic year

| | | |
|---|-------------|--------------------------|
| (E) Name of the department | - | Civil Engineering |
| Course | - | Engineering & |
| Technology | Level- | - |
| UG | | |
| 1 st Year Approval by AICTE- | - | 2010 |
| Shift | - | First |
| Year wise Sanctioned Intake- | CAY - 60 | CAY_1- -- |
| CAY_2--- | | |
| Year wise Actual admissions*- | CAY - 55 | CAY_1--- |
| CAY_2--- | | |
| Cut off marks – General Quota- | CAY -55.48% | CAY_- --- |
| CAY_--- | | |
| % students passed with Distinction- | CAY-RA | CAY_1---- |
| CAY_2--- | | |
| % Students passed with 1 st Class- | CAY-RA | CAY_1--- |
| CAY_2--- | | |
| Students' placed- | CAY_1--- | CAY_1--- |
| CAY_2--- | | |
| Average Pay Package,Rs/Year- | CAY--- | CAY_1--- |
| CAY_2--- | | |
| Students Opted for Higher Studies- | CAY--- | CAY_1--- |
| CAY_2--- | | |
| Accreditation Status of the Course | - | Not Accredited |

| | |
|----------------------------------|---|
| Doctoral Courses | - No |
| Foreign Collaborations, if any | - -- |
| Professional Society Memberships | - Member if ISTE (student Chapter) |
| Professional Activities | - Work shop, paper presentation and seminar on recent advancement in the Field of Civil Engg. Are organized by the Department during the Entire academic session. |
| Consultancy Activities | - Carrier Consultancy Services to Departmental Students are being Provided by the Academic Experts of various Institutes of India. |
| Grants fetched | : -- |
| Departmental Achievements | : -- |
| Distinguished Alumni | : -- |

***- Actual admissions including the students admitted under TFWS quota.**

CAY- current Academic year

| | | |
|--|---|---|
| (F) Name of the department | - | Computer Science & Engineering |
| Course | - | Engineering & Technology |
| Level | - | PG |
| 1 st Year Approval by AICTE | - | 2008 |

| | | | |
|--|---|--|---------------|
| Shift | - | First | |
| Year wise Sanctioned Intake | - | CAY - 18 | CAY_1- 18 |
| CAY_2-18 | | | |
| Year wise Actual admissions* | - | CAY - 18 | CAY_1-18 |
| CAY_2-18 | | | |
| Cut off marks – General Quota | - | CAY -63.00% | CAY_-63.65% % |
| CAY_59.35% | | | |
| % students passed with Distinction | - | CAY-RA | CAY_1--- |
| CAY_2--- | | | |
| % Students passed with 1 st Class | - | CAY-RA | CAY_1--- |
| CAY_2--- | | | |
| Students placed | - | CAY_--- | CAY_1--- |
| CAY_2--- | | | |
| Average Pay Package,Rs/Year | - | CAY--- | CAY_1--- |
| CAY_2--- | | | |
| Students Opted for Higher Studies | - | CAY--- | CAY_1-3 |
| CAY_2-8 | | | |
| Accreditation Status of the Course | : | Not Accredited | |
| Doctoral Courses | : | No | |
| Foreign Collaborations, if any | : | -- | |
| Professional Society Memberships | : | Member if ISTE (student Chapter) | |
| Professional Activities | : | Work shop, paper presentation and seminar on | |
| recent | | | |

Advancement in the Field of Computer Science &

Engg. are

Organized by the Department during the Entire

academic session.

Consultancy Activities : Carrier Consultancy Services to Departmental
Students are being

Provided by the Academic Experts of various

Institutes of India.

Grants fetched : --

Departmental Achievements : --

Distinguished Alumni : --

***- Actual admissions including the students admitted under TFWS quota.**

CAY- current Academic year

| | | |
|--|---|--------------------------|
| (G) Name of the department | - | Electronics & |
| Communication Engg. | | |
| Course | - | Engineering & Technology |
| Specialization | - | Digital Communication |
| Level | - | PG |
| 1 st Year Approval by AICTE | - | 2010 |
| Shift | - | First |

| | | | |
|--|---|-------------|-----------|
| Year wise Sanctioned Intake | - | CAY - 18 | CAY_1- -- |
| CAY_2--- | | | |
| Year wise Actual admissions* | - | CAY - 18 | CAY_1--- |
| CAY_2--- | | | |
| Cut off marks – General Quota | - | CAY -64.15% | CAY_--- |
| CAY_--- | | | |
| % students passed with Distinction | - | CAY-RA | CAY_1--- |
| CAY_2--- | | | |
| % Students passed with 1 st Class | - | CAY-RA | CAY_1--- |
| CAY_2--- | | | |
| Students placed | - | CAY_--- | CAY_1--- |
| CAY_2--- | | | |
| Average Pay Package,Rs/Year | - | CAY--- | CAY_1--- |
| CAY_2--- | | | |
| Students Opted for Higher Studies | - | CAY--- | CAY_1--- |
| CAY_2--- | | | |

| | | |
|------------------------------------|---|---|
| Accreditation Status of the Course | : | Not Accredited |
| Doctoral Courses | : | No |
| Foreign Collaborations, if any | : | -- |
| Professional Society Memberships | : | Member if ISTE (student Chapter) |
| Professional Activities | : | Work shop, paper presentation and seminar on recent |

Advancement in the Field of electronics &
communication Engg.

Are organized by the Department during the Entire
academic
Session.

Consultancy Activities : Carrier Consultancy Services to Departmental
Students are being
Provided by the Academic Experts of various
Institutes of India.

Grants fetched : --

Departmental Achievements : --

Distinguished Alumni : --

***- Actual admissions including the students admitted under TFWS quota.**

CAY- current Academic year

| | | |
|--|---|-------------------------------|
| (H) Name of the department | - | Electrical Engineering |
| Course | - | Engineering & Technology |
| Specialization | - | Power system |
| Level | - | PG |
| 1 st Year Approval by AICTE | - | 2010 |
| Shift | - | First |

| | | | |
|--|---|-------------|-----------|
| Year wise Sanctioned Intake | - | CAY - 18 | CAY_1- -- |
| CAY_2--- | | | |
| Year wise Actual admissions* | - | CAY - 14 | CAY_1--- |
| CAY_2--- | | | |
| Cut off marks – General Quota | - | CAY -60.98% | CAY_--- |
| CAY_--- | | | |
| % students passed with Distinction | - | CAY-RA | CAY_1--- |
| CAY_2--- | | | |
| % Students passed with 1 st Class | - | CAY-RA | CAY_1--- |
| CAY_2--- | | | |
| Students placed | - | CAY_--- | CAY_1--- |
| CAY_2--- | | | |
| Average Pay Package,Rs/Year | - | CAY--- | CAY_1--- |
| CAY_2--- | | | |
| Students Opted for Higher Studies | - | CAY--- | CAY_1--- |
| CAY_2--- | | | |

| | | |
|------------------------------------|---|---|
| Accreditation Status of the Course | : | Not Accredited |
| Doctoral Courses | : | No |
| Foreign Collaborations, if any | : | -- |
| Professional Society Memberships | : | Member if ISTE (student Chapter) |
| Professional Activities | : | Work shop, paper presentation and seminar on recent |

Advancement in the Field of electrical Engineering

academic
 Are organized by the Department during the Entire
 Session.

Consultancy Activities : Carrier Consultancy Services to Departmental
 Students are being
 Provided by the Academic Experts of various
 Institutes of India.

Grants fetched : --

Departmental Achievements : --

Distinguished Alumni : --

***- Actual admissions including the students admitted under TFWS quota.**

CAY- current Academic year

| | | |
|--|----------|---------------------------|
| (I). Name of the department | - | Management Studies |
| Course | - | Master in Business |
| administration (MBA) | Level | - |
| PG | | |
| 1 st Year Approval by AICTE | - | 2007 |
| Shift | - | first |
| Year wise Sanctioned Intake- | CAY - 60 | CAY_1- 60 |
| CAY_2-60 | | |

| | | |
|--|--------------|---------------|
| Year wise Actual admissions* CAY_2-48 | CAY - 15 | CAY_1-21 |
| Cut off marks – General Quota- CAY_52.76% | CAY -46% | CAY_-51.33 % |
| % students passed with Distinction- CAY_2-52% | CAY-72% | CAY_1-61.34% |
| % Students passed with 1 st Class- CAY_2-69% | CAY-80% | CAY_1-65% |
| Students placed- CAY_2-6 | CAY_-09 | CAY_1- 11 |
| Average Pay Package,Rs/Year- CAY_2-3.0lacs | CAY-3.0 Lacs | CAY_1-2.8lacs |
| Students Opted for Higher Studies- CAY_2-2 | CAY-9 | CAY_1-5 |
| Accreditation Status of the Course : Not Accredited | | |
| Doctoral Courses : No | | |
| Foreign Collaborations, if any : -- | | |
| Professional Society Memberships: -- | | |
| Professional Activities : Work shop, paper presentation and seminar on recent Advancement in the Field of Management Studies Are organized by the Department during The Entire academic Session. | | |

Consultancy Activities : Carrier Consultancy Services to Departmental Students
are being

Provided by the Academic Experts of various Institutes of
India.

Grants fetched : --

Departmental Achievements : --

Distinguished Alumni : --

***- Actual admissions including the students admitted under TFWS quota.**

CAY- current Academic year

II SHIFT

| | | |
|---|----------|-------------------|
| (A) Name of the department | - | Electrical |
| Engineering | | |
| Course | - | Engineering & |
| Technology | Level- | - |
| UG | | |
| 1 st Year Approval by AICTE- | - | 2010 |
| Shift | - | Second Shift |
| Year wise Sanctioned Intake- | CAY - 60 | CAY_1- -- |
| CAY_2--- | | |

| | | |
|--|---|-----------|
| Year wise Actual admissions*- CAY_2--- | CAY - 14 | CAY_1--- |
| Cut off marks – General Quota- CAY_--- | CAY -54.15% | CAY_- --- |
| % students passed with Distinction- CAY_2--- | CAY-RA | CAY_1---- |
| % Students passed with 1 st Class- CAY_2--- | CAY-RA | CAY_1--- |
| Students' placed- CAY_2--- | CAY_--- | CAY_1--- |
| Average Pay Package,Rs/Year- CAY_2--- | CAY--- | CAY_1--- |
| Students Opted for Higher Studies- CAY_2--- | CAY--- | CAY_1--- |
| Accreditation Status of the Course | - Not Accredited | |
| Doctoral Courses | - No | |
| Foreign Collaborations, if any | - -- | |
| Professional Society Memberships | - Member if ISTE (student Chapter) | |
| Professional Activities advancement in the Department during the | - Work shop, paper presentation and seminar on recent Field of electrical Engg. Are organized by the Entire academic session. | |

Consultancy Activities - Carrier Consultancy Services to Departmental Students
are being

Provided by the Academic Experts of various Institutes of
India.

Grants fetched : --

Departmental Achievements : --

Distinguished Alumni : --

***- Actual admissions including the students admitted under TFWS quota.**

CAY- current Academic year

| | | |
|---|----------|-------------------------------|
| (B) Name of the department | - | Computer Science & |
| Engineering | | |
| Course | - | Engineering & |
| Technology | Level- | - |
| UG | | |
| 1 st Year Approval by AICTE- | - | 2010 |
| Shift | - | Second Shift |
| Year wise Sanctioned Intake- | CAY - 60 | CAY_1- -- |
| CAY_2--- | | |
| Year wise Actual admissions*- | CAY - 00 | CAY_1--- |
| CAY_2--- | | |
| Cut off marks – General Quota- | CAY --- | CAY_1- --- |
| CAY_--- | | |

| | | |
|---|----------|-----------|
| % students passed with Distinction- CAY_2--- | CAY-RA | CAY_1---- |
| % Students passed with 1 st Class- CAY_2--- | CAY-RA | CAY_1--- |
| Students' placed- CAY_2--- | CAY_1--- | CAY_1--- |
| Average Pay Package, Rs/Year- CAY_2--- | CAY--- | CAY_1--- |
| Students Opted for Higher Studies- CAY_2--- | CAY--- | CAY_1--- |

Accreditation Status of the Course - Not Accredited

Doctoral Courses - No

Foreign Collaborations, if any - --

Professional Society Memberships - Member if ISTE (student Chapter)

Professional Activities - Work shop, paper presentation and seminar on recent advancement in the

Field of Computer Science & Engg. Are organized by the Department

During the Entire academic session.

Consultancy Activities - Carrier Consultancy Services to Departmental Students are being

Provided by the Academic Experts of various Institutes of India.

Grants fetched : --

Departmental Achievements : --

Distinguished Alumni : --

*- Actual admissions including the students admitted under TFWS quota.

CAY- current Academic year

13. Teaching Staff : The brief profile of Each Teaching Staff is attached
(AS attachment No.2)

14. Admission quota-

I SHIFT

| Discipline | Sanctioned Seats | Admission Quota | | | |
|---|------------------|---|--------------|------------------------------|---|
| | 20010-11 | Management 15% | AIEEE 15% | RPET/ RMET 70% /85% | TFWS* 10% additional to existing intake |
| B.Tech. Electronics & communication Engg | 90 | 14 | 13 | 63 | 9 |
| B.Tech. Computer Sc. | 120 | 18 | 18 | 84 | 12 |
| B.Tech. Information Tech.(Applied for the closure from the session 2011-12) | 60 | 09 | 09 | 42 | 6 |
| B.Tech. Electrical Engg. | 90 | 13 | 14 | 63 | 6 |
| B.Tech. Civil Engg. | 60 | 09 | 09 | 42 | 6 |
| B.Tech. Mechanical Engg.(Proposed from the session 2011-12) | 60 | 09 | 09 | 42 | 6 |
| M.Tech. Computer Science | 18 | As per the guide lines of Rajasthan Technical University/State government | | | |
| M.Tech. Digital communication (ECE) | 18 | As per the guide lines of Rajasthan Technical University/State government | | | |
| M.Tech. Power System (EE) | 18 | As per the guide lines of Rajasthan Technical University/State government | | | |

| | | | | | |
|-----|----|---|----|----|---|
| MBA | 60 | 9 | -- | 51 | 6 |
|-----|----|---|----|----|---|

1 SHIFT

| Discipline | Sanctioned Seats | Admission Quota | | | |
|--------------------------------|------------------|-------------------|--------------|------------------------------|---|
| | 20010-11 | Management 15% | AIEEE 15% | RPET/ RMET 70% /85% | TFWS* 10% additional to existing intake |
| B.Tech. Electrical Engg. | 60 | 09 | 09 | 42 | 6 |
| B.Tech. Computer Sc.& Engg. | 60 | 09 | 09 | 42 | 6 |

Entrance Test / Admission Criteria:

The admissions in the college are made through RPET which is conducted at the state level by a Govt. agency nominated by Govt. of Rajasthan. Presently it is being conducted by Directorate, Technical Education, Jodhpur.

The 15% of sanctioned seats are filled through AIEEE & 15% of sanctioned seats are filled through Management.

Website of test agency: www.techedu.rajasthan.gov.in

Criteria and weight age for Admission:

UG courses(B.Tech.) :

The admissions are made on the basis of the rank obtained by students in the RPET Exam. The rank is awarded on the basis of marks obtained in the test. The minimum qualification for participation in test is 10+2.

The admissions at college level are made after exhausting the merit list of RPET prepared by test conducting agency.

The admissions at the college level are made in the order of RPET Rank, AIEEE Rank, and percentage in 10+2.

PG courses(M.Tech.) :

Admissions are given as per the guide lines of Rajasthan Technical University, Kota
The minimum Qualification is 1st class graduate in Engg.& Tech / valid GATE score Card.

PG courses(MBA) :

Admissions are given on the basis of merits in Qualifying Examination (RMAT). The rank is awarded on the basis of marks obtained in the test. The minimum qualification for participation in test is Graduation.

The admissions at college level are made after exhausting the merit list of RMAT prepared by test conducting agency.

The admissions at the college level are made in the order of RMAT rank, percentage in Graduation with a minimum of 50 % (45% in case of SC/ST or Non Creamy layer OBC students

Cut off / last Candidate Admitted:-

ADMISSION DETAILS OF SESSION 2010-11

I SHIFT

(A) Engg. & Tech. :-

| Sanctioned intake(UG) | 420 | Month | | Highest | Lowest |
|--|------------|------------|--------------|---------|--------|
| Seats filled through RPET I counseling | 143 | 31/08/2010 | Rank | 13903 | 71029 |
| Seats filled through RPET II counseling | 12 | 20/09/10 | Rank | 14283 | 65820 |
| Seats filled through AIEEE Counseling | 1 | 21/08/10 | Rank | 768880 | |
| Seats filled in management quota | 4 | 30/08/10 | % 12th class | 76.25% | 48.30% |
| Seats filled directly | 87 | 30/09/10 | % 12th class | 77.38% | 45.69% |
| Total Seats Filled (UG) | 247 | | | | |
| Sanctioned intake(PG) | 54 | | | | |
| Seats filled directly/management quota (M.Tech. in CSE) | 18 | 25/10/10 | B.E.% | 79.08% | 63.00% |
| Seats filled directly/management quota (M.Tech. in ECE) | 18 | 25/10/10 | B.E.% | 73.71% | 64.15% |
| Seats filled directly/management quota (M.Tech. in EE) | 14 | 25/10/10 | B.E.% | 83.05% | 60.98% |
| Total Seats Filled | 50 | | | | |

(B) Management :-

| Sanctioned intake | 60 | Month | | Highest | Lowest |
|-------------------|----|-------|--|---------|--------|
|-------------------|----|-------|--|---------|--------|

| | | | | | |
|---|----|----------|--------------|-------|----|
| | 1 | August | Rank | 4544 | |
| Seats filled through RMAT II counseling | 0 | | Rank | | |
| Seats filled directly/management quota | 14 | 22/09/10 | % Graduation | 62.16 | 46 |
| Total Seats filled | 15 | | | | |

II SHIFT

(A) Engg. & Tech. :-

| | | | | | |
|---|-----|-------|--------------|---------|--------|
| Sanctioned intake(UG) | 120 | Month | | Highest | Lowest |
| Seats filled through RPET I counseling | 6 | | Rank | 51490 | 65559 |
| Seats filled through RPET II counseling | 0 | | Rank | | |
| Seats filled through AIEEE Counseling | 0 | | Rank | | |
| Seats filled directly/management quota | 8 | | % 12th class | 60.62% | 54.15 |
| Total Seats Filled (UG) | 14 | | | | |

Fee Structure :- (Fee Structure for Session 2010-11 Decided By Department of Technical Education, Govt. of Rajasthan)

| Discipline | Category | SC/ ST/ OBC/ Girls | General |
|--|--------------|--|---|
| B.Tech. (Computer, IT, Electronics & Communication, Electrical, Civil) M.Tech. | Self Finance | Rs.50,000/-Per Year + 5,000/- Caution money | Rs.50000/-per Year + 5,000/- Caution money |
| | Self Finance | Rs.50000/-Per Year + 5,000/- Caution money | Rs.50000/-Per Year + 5,000/- Caution money |
| M.B.A. | Self Finance | Rs.42000/-Per Year + 5,000/- Caution money | Rs.42000/-Per Year + 5,000/- Caution money |

In addition to this, the students are required to pay an examination fee to the Rajasthan Technical University Kota.

Admission Calendar : As per the guide lines of Rajasthan

PIO Quota : No

15. Infrastructural Information :

TOTAL BUILT UP AREA

| S.No. | AREA DETAILS | AREA IN Sq.Mtrs. |
|---|---|------------------|
| 1 | INSTRUCTIONAL AREA (INA) | 10250.14 |
| 2 | ADMINISTRATIVE AREA (ADA) | 1507.77 |
| 3 | AMENITIES AREA (AMA) | 12550.05 |
| TOTAL AREA (INA + ADA + AMA) | | 24307.96 |
| | CIRCULATION AREA(Corridor , Walk ways and other Common Area) CIA = 0.25 X (INA + ADA + AMA) | 6076.99 |
| total built up Area in square meter = (INA + ADA + AMA) + (CIA) | | 30384.95 |

Instructional Area Details

1.Details of Class Rooms:-

| S No. | Instructional | Code | Size in Metre | Area in Sq. Metre |
|-------|----------------------|----------|---------------|-------------------|
| 1 | Lecture Theatre - 1 | MB-LT-01 | 9.45 x 12.50 | 118.12 |
| 2 | Lecture Theatre - 2 | MB-LT-02 | 8.53 x 8.23 | 70.2 |
| 3 | Lecture Theatre - 3 | BS-LT-03 | 8.53 x 8.23 | 70.2 |
| 4 | Lecture Theatre - 4 | BS-LT-04 | 8.84 x 9.45 | 83.53 |
| 5 | Lecture Theatre - 5 | BS-LT-05 | 8.84 x 9.45 | 83.53 |
| 6 | Lecture Theatre - 6 | BS-LT-07 | 8.84 x 9.45 | 83.53 |
| 7 | Lecture Theatre - 7 | BS-LT-06 | 8.84 x 9.45 | 83.53 |
| 8 | Lecture Theatre - 8 | BS-LT-08 | 8.53 x 10.13 | 88.4 |
| 9 | Lecture Theatre - 9 | BS-LT-09 | 8.53 x 10.36 | 88.37 |
| 10 | Lecture Theatre - 10 | EE-LT-10 | 8.84 x 9.45 | 83.53 |

| | | | | |
|------------------------------|----------------------|-----------|--------------|----------------|
| 11 | Lecture Theatre - 11 | EE-LT-11 | 8.84 x 9.45 | 83.53 |
| 12 | Lecture Theatre - 12 | EC-LT-12 | 8.84 x 9.45 | 83.53 |
| 13 | Lecture Theatre - 13 | EC-LT-13 | 8 x 9.45 | 75.6 |
| 14 | Lecture Theatre - 14 | EC-LT-14 | 8.84 x 9.45 | 83.53 |
| 15 | Lecture Theatre - 15 | CS-LT-15 | 8.84 x 9.45 | 83.53 |
| 16 | Lecture Theatre - 16 | CS-LT-16 | 8.84 x 8.53 | 75.4 |
| 17 | Lecture Theatre - 17 | CS-LT-17 | 8.84 x 8.53 | 75.4 |
| 18 | Lecture Theatre - 18 | IT-LT-18 | 8 x 8.53 | 68.24 |
| 19 | Lecture Theatre - 19 | IT-LT-19 | 8.84 x 8.53 | 75.4 |
| 20 | Lecture Theatre - 20 | IT-LT-20 | 8.84 x 8.53 | 75.4 |
| 21 | Lecture Theatre -21 | ECE-LT-21 | 15.32 x 4.67 | 71.54 |
| 22 | Lecture Theatre - 22 | ECE-LT-22 | 15.47 x 4.67 | 72.24 |
| 23 | Lecture Theatre - 23 | ECE-LT-23 | 15.47 x 4.67 | 72.24 |
| 24 | Lecture Theatre - 24 | ECE-LT-24 | 15.32 x 4.67 | 71.54 |
| 25 | Lecture Theatre - 25 | ECE-LT-25 | 15.47 x 4.87 | 75.33 |
| 26 | Lecture Theatre-26 | CS-LT-26 | 15.47 x 4.87 | 75.33 |
| 27 | Lecture Theatre-27 | CS-LT-27 | 15.32 x 4.67 | 72.54 |
| 28 | Lecture Theatre-28 | CS-LT-28 | 15.47 x 4.67 | 72.24 |
| 29 | Lecture Theatre-29 | CE-LT-29 | 7.62 x 8.90 | 67.81 |
| Total Area in Sq.mtrs | | | | 2283.31 |

2.Details of Tutorial Rooms

| S.No | Tutorial Room No. | Code | Size in Metre | Area in Sq.Mtrs |
|------------------------------|-------------------|-------------|---------------|-----------------|
| 1 | Tutorial T-1 | MB-TR-01 | 4.87 x 7.62 | 37.1 |
| 2 | Tutorial T-2 | EE-TR-02 | 8.53 x 3.96 | 28.91 |
| 3 | Tutorial T-3 | CS-TR-03 | 4.87 x 9.14 | 44.51 |
| 4 | Tutorial T-4 | IT-TR-04 | 4.87 x 7.62 | 37.1 |
| 5 | Tutorial T-5 | EC-TR-05 | 9.75 x 3.65 | 35.58 |
| 6 | Tutorial T-6 | CE-TR-06 | 7.62 x 4.87 | 37.1 |
| 7 | Tutorial T-7 | BS-LT-07 | 7.62 x 4.87 | 37.1 |
| 8 | Tutorial T-8 | CS-PG-TR-08 | 6.70 x 5.06 | 33.73 |
| 9 | Tutorial T-9 | CS-PG-TR-09 | 6.70 x 5.18 | 34.75 |
| 10 | Tutorial T-10 | EC-PG-TR-10 | 6.70 x 5.06 | 33.73 |
| 11 | Tutorial T-11 | EE-PG-TR-11 | 6.70 x 5.18 | 34.75 |
| Total Area in Sq.mtrs | | | | 394.36 |

3. Laboratory Details

| S.No. | Name of Laboratory | Code | Size in mtrs | Area in Sq.m |
|-------|---------------------------|----------|--------------|--------------|
| 1 | Network Prog. Lab.-I | CS-LB-01 | 9.45 x 7.08 | 66.9 |
| 2 | Network Prog. Lab.-II | CS-LB-02 | 9.45 x 7.31 | 69.07 |
| 3 | Computer Programing Lab I | CS-LB-03 | 4.87 x16.46 | 80.16 |
| 4 | Software Engg. Lab | CS-LB-07 | 5.18 x 13.49 | 69.87 |
| 5 | Shell Prog. Lab | CS-LB-06 | 5.18 x 13.49 | 69.87 |

| | | | | |
|-----------------------|------------------------------------|------------------|--------------|---------|
| 6 | Physics Lab | BS-LB-01 | 4.87 x 12.42 | 60.48 |
| 7 | Visual Studio Lab-1 | CS-LB-05 | 5.94 x 11.28 | 67 |
| 8 | Visual Studio Lab-2 | CS-LB-04 | 5.94 x 11.28 | 67 |
| 9 | Digital Comm. Lab | EC-LB-04 | 5.25 x 14.02 | 73.6 |
| 10 | Antenna & Wireless Comm. Lab | EC-LB-05 | 4.72 x 14.02 | 66.17 |
| 11 | MicroWave Engg. Lab | EC-LB-06 | 4.72 x 14.02 | 66.17 |
| 12 | Electronics Lab-I | EC-LB-07 | 4.72 x 14.02 | 66.17 |
| 13 | Electronics Lab-II | EC-LB-08 | 4.72 x 14.02 | 66.17 |
| 14 | Digital Electronics Lab | EC-LB-09 | 5.25 x 14.02 | 73.6 |
| 15 | Communication Lab | EC-LB-01 | 8.84 x 9.45 | 83.53 |
| 16 | MicroProcessor Lab | EC-LB-02 | 8.84 x 9.45 | 83.53 |
| 17 | EED Lab | EC-LB-03 | 8.84 x 9.45 | 83.53 |
| 18 | Research Lab(Computer) | CS-LB-15 | 9.14 x 8.90 | 81.34 |
| 19 | Multimedia Lab | CS-LB-14 | 7.62 x 8.90 | 67.81 |
| 20 | Data Warehousing Lab | CS-LB-13 | 7.62 x 8.90 | 67.81 |
| 21 | Java Lab | CS-LB-12 | 11.12 x 8.90 | 98.96 |
| 22 | SQL Lab | CS-LB-11 | 11.12 x 8.90 | 99.23 |
| 23 | VHDL Lab | CS-LB-10 | 8.30 x 8.90 | 73.87 |
| 24 | Elec. Drive & Control Lab | EE-LB-09 | 12.80 x 5.48 | 70.14 |
| 25 | Advance Power Elect. Lab | EE-LB-08 | 12.80 x 5.48 | 70.14 |
| 26 | Circuit Analysis Lab | EE-LB-03 | 8.84 x 9.45 | 83.53 |
| 27 | Elec. Machine Lab-I | EE-LB-01 | 8.84 x 9.45 | 83.53 |
| 28 | Elec. Machine Lab-2 | EE-LB-02 | 8.84 x 9.45 | 83.53 |
| 29 | Power System High Voltage Lab | EE-LB-04 | 5.25 x 14.02 | 73.6 |
| 30 | Power Electronics Lab | EE-LB-05 | 4.72 x 14.02 | 66.17 |
| 31 | Electrical Workshop | EE-LB-06 | 4.72 x 14.02 | 66.17 |
| 32 | Electrical Measurement Lab | EE-LB-07 | 5.25 x 14.02 | 73.6 |
| 33 | EMI Lab | EE-LB-10 | 11.12 x 8.90 | 98.96 |
| 34 | Electronics Workshop | EE-LB-11 | 11.15 x 8.90 | 99.23 |
| 35 | Computer Prog. Lab-II | CS-LB-08 | 8.28 x 10.68 | 88.43 |
| 36 | Computer Lab (Project) | CS-LB-09 | 15.43 x 7.80 | 120.35 |
| 37 | Civil Engg (BMT) Lab | CE-LB-01 | 9.14 x 8.90 | 81.34 |
| 38 | Civil Engg (Survey) Lab | CE-LB-02 | 7.62 x 8.90 | 67.81 |
| 39 | MAT Lab-17 | CS-LB-16 | 7.62 x 8.91 | 67.81 |
| 40 | Civil Engg (MECH.) Lab | CE-LB-03 | 11.12 x 8.90 | 98.96 |
| 41 | Chemistry Lab | BS-LB-02 | 11.12 x 8.90 | 98.96 |
| 42 | EVS Lab | BS-LB-03 | 8.30 x 8.90 | 73.87 |
| 43 | System Software Lab (Computer PG) | CS-LB-17 | 6.70 x 10.36 | 69.51 |
| 44 | Communication System Lab | EC-LB-10 | 6.70 x 10.36 | 69.51 |
| 45 | Mat Lab Programming Lab | EE-LB-12 | 6.70 x 10.36 | 69.51 |
| 46 | Communication Lab | BS-LB-04 | 6.70 x 10.36 | 69.51 |
| 47 | Electrical Research Lab | Research Lab-EE | 6.70 x 10.36 | 69.51 |
| 48 | Electronics Research lab | Research Lab-ECE | 6.70 x 10.36 | 69.51 |
| Total Area in Sq.mtrs | | | | 3685.03 |

4. Other Instructional Area

| S.No. | Details | code | size in mtrs | Area in Sq.m. |
|-----------------------|------------------------------|--------|---------------|---------------|
| 1 | Mechanical Workshop | BS-LB | 32.01 x 15.62 | 499.99 |
| 2 | Additional Work Shop 2-EE | WS-02 | 11.96 x 18.90 | 226.16 |
| 3 | Additional Work Shop 3-EE | WS-03 | 12.19 x 18.90 | 230.48 |
| 4 | Additional Work Shop 4-CE | WS-04 | 12.19 x 18.90 | 230.48 |
| 5 | Additional Work Shop 5-ECE | WS-05 | 11.96 x 18.90 | 226.16 |
| 6 | Drawing Hall | DH | 8.23 x 20.57 | 169.29 |
| 7 | Computer Center | CS | 12.19 x 18.90 | 230.48 |
| 8 | Computer Center MBA | MBA | 7.62 x 8.90 | 67.81 |
| 9 | Seminar Hall | SH | 9.45 x 14.02 | 132.48 |
| 10 | Seminar Hall-CSE | SH-CSE | 16.69 x 10.36 | 173 |
| 11 | Seminar Hall-IT | SH-IT | 13.64 x 10.36 | 141.4 |
| 12 | Seminar Hall-ECE | SH-ECE | 13.64 x 10.36 | 141.4 |
| 13 | Seminar Hall-EE | SH-EE | 13.64 x 10.36 | 141.4 |
| 14 | Seminar Hall-CE | SH-CE | 16.69 x 10.36 | 173 |
| 15 | Library | LBRY | 13.79 x 15.24 | 210.15 |
| 16 | Book Bank | BBK | 8.22 x 12.49 | 102.66 |
| 17 | Reading Room | RR | 8.22 x 10.05 | 82.61 |
| 18 | Reprogratic facility (Zerox) | ZXR | 6.85x3.12 | 21.37 |
| 19 | Library(Central) | | 24.39 x 18.90 | 460.96 |
| 20 | Reading Room(Central) | | 11.96 x 18.90 | 226.16 |
| Total Area in Sq.mtrs | | | | 3887.44 |

| S.No. | Instructional Area Details | Total Area |
|--------------------------|----------------------------|------------|
| 1 | Lecture Theatre | 2283.31 |
| 2 | tutorial Room | 394.36 |
| 3 | Laboratory Area | 3685.03 |
| 4 | Other Instructional Area | 3887.44 |
| Total Instructional Area | | 10250.14 |

Administrative Area Details

| S.No. | Details | code | size in mtrs | Area in Sq.m. |
|-------|------------------------|--------|---------------|---------------|
| 1 | HOD EC DEPARTMENT | HD-EC | 3 x 5 | 15 |
| 2 | Faculty Cabin-ECE | | 3 x 5 | 15 |
| 3 | Director Office | DO | 4.87 x 5.18 | 25.22 |
| 4 | ADM Office-I | ADM-I | 2.13 x 5.18 | 11.03 |
| 5 | Board Room | BR | 4.87 x 6.09 | 29.65 |
| 6 | Main Office | MO | 4.87 x 6.09 | 29.65 |
| 7 | MBA Deptt. HOD | HD-MB | 4.87 x 5.18 | 25.22 |
| 8 | ADM Office-II | ADM-II | 4.87 x 6.09 | 29.65 |
| 9 | Reception Hall | RECP | 10.50 x 13.49 | 141.64 |
| 10 | Exam Controller Office | EX-I | 4.87 x 6.09 | 29.65 |

| | | | | |
|-----------------------|---|------------------|-----------------|---------|
| 11 | Exam Cell -II | EX-II | 4.87 x 6.09 | 29.65 |
| 12 | Traning & Placement Cell | TP | 8.53 x 4.87 | 41.54 |
| 13 | Principal Office | PO | 8.53 x 5.18 | 44.18 |
| 14 | Store Room | STR | 4.87 x 5.18 | 25.22 |
| 15 | Exam Strong Room | Ex-SR | 4.87 x 5.18 | 25.22 |
| 16 | Account Office | AO | 8.53 x 4.03 | 34.37 |
| 17 | Electrical HOD | HD-EE | 5 x 4 | 20 |
| 18 | Faculty Cabin | FCbn | 5 x 4 | 20 |
| 19 | Faculty Cabin | FCbn | 10 x 4 x 3 | 120 |
| 20 | Store Room | STR | 4.87 x 3.73 | 18.16 |
| 21 | HOD-CS Cabin | HD-CS | 4.87 x 6.09 | 29.65 |
| 22 | Staff Room | SR | 4.87 x 6.09 | 29.65 |
| 23 | Store Room | Store | 4.80 x 4.88 | 23.37 |
| 24 | Store Room | ST | 10.05 x 2.62 | 26.33 |
| 25 | Office- 1 | Office-01 | 6.70 x 5.48 | 36.71 |
| 26 | Office- 2 | Office-02 | 6.70 x 5.48 | 36.71 |
| 27 | Office- 3 | Office-03 | 6.70 x 3.96 | 26.55 |
| 28 | Office- 4 | Office-04 | 6.70 x 3.96 | 26.55 |
| 29 | Pantry | Pantry | 2.28 x 5.03 | 11.46 |
| 30 | Security Room | SR | 3.04 x 4.87 | 14.82 |
| 31 | Admission Incharge | AI | 4.87 x 4.45 | 21.67 |
| 32 | Chamber of HOD's, Sports Officer , Staff Room | | | 97.5 |
| 33 | First Year Incharge Office | HD-App.Sc. | 4.87 x 5.18 | 25.24 |
| 34 | Vice Principal Office | VPO | 3.04 x 6.09 | 18.53 |
| 35 | MD Office | MD Office | | 30 |
| 36 | College Office | | 2 x 6.09 x 4.87 | 59.31 |
| 37 | Maintanance Office | | 6.09 x 5.79 | 35.27 |
| 38 | Maintanance Work Shop | | 9.14 x 7.62 | 69.64 |
| 39 | Central Store-01 | Central Store-01 | 9.14 x 7.62 | 69.64 |
| 40 | Central Store-02 | Central Store-02 | 9.14 x 7.62 | 69.64 |
| 41 | Canteen for Staff | Canteen | 4.26 x 4.57 | 19.48 |
| Total Area in Sq.mtrs | | | | 1507.77 |

DETAILS OF AMENITIES AREA

| SR.No | DETAILS OF AREA | CODE NO. | Size (Mt. X Mt.) | Area in Sq. Mts. |
|-------|----------------------------|-------------|------------------|------------------|
| 1 | Medical Investigation Room | MI-Room | 4.57 x 4.57 | 20.89 |
| 2 | Bank Ext. Counter | Bank | 10.67 x 6.09 | 65.06 |
| 3 | Mess and Dining | Mess | 33.84 x 31.09 | 1052.34 |
| 4 | Student Activity Room | SAR | 4.80 x 4.87 | 23.37 |
| 5 | Canteen & Grocery Shop | | | 751.8 |
| 6 | Girls Common Room | GCR | 9.75 x 10.36 | 101.11 |
| 7 | Boys Common Room | BCR | 9.75 x 10.36 | 101.11 |
| 8 | Boys Hostel-01 | | | 2647.43 |
| 9 | Boys Hostel-02 | | | 3905.3 |
| 10 | Girls Hostel | | | 3207 |
| 11 | Barber Shop | Barber Shop | 4.26 x 4.57 | 19.48 |

| | | | | |
|-----------------------|------------------|------------|---------------|----------|
| 12 | Washerman Shop | | 9.07 x 4.57 | 41.44 |
| 13 | Indor Stadium | | 14.1 x 4.57 | 64.43 |
| 14 | Gymnasium | Gym | 9.14 x 4.57 | 41.8 |
| 15 | Stationary Store | | 4.87 x 4.57 | 22.27 |
| 16 | Swimming Pool | | 10.21 x 8.84 | 90.25 |
| 17 | Toilet | Toilet | 1.82 x 1.21 | 2.21 |
| 18 | Toilet (Gents) | TT-G | 2.28 x 4.87 | 11.1 |
| 19 | Toilet (Ladies) | TT-L | 2.43 x 4.87 | 11.83 |
| 20 | Toilet | TT | 4 x 4 | 16 |
| 21 | Toilet(Boys) | Toilet-4.3 | 2.28 x 5.18 | 12 |
| 22 | Toilet(Girls) | Toilet-4.4 | 2.28 x 5.56 | 12.92 |
| 23 | Boys Toilet | BT | 4.87 x 6.09 | 29.65 |
| 24 | Toilet(Ladies) | TOLT | 5 x 4 | 20 |
| 25 | Toilet(Boys) | Toilet-4.1 | 2.28 x 5.18 | 12 |
| 26 | Toilet(Girls) | Toilet-4.2 | 2.28 x 5.56 | 12.92 |
| 27 | Toilet(Ladies) | TT | 12.60 x 12.60 | 158.76 |
| 28 | Toilet(Gents) | TT | 10 x 7 | 70 |
| 29 | Toilet | TT | 4.80 x 4.88 | 23.37 |
| 30 | Toilet | Toilet | 1.82 x 1.21 | 2.21 |
| Total Area in Sq.mtrs | | | | 12550.05 |

RESIDENTIAL FACILITIES FOR STAFF

| SR.No | DETAILS OF AREA | CODE NO. | Size (Mt. X Mt.) | Area in Sq. Mts. |
|-------|-------------------------------|-------------|------------------|------------------|
| 1 | Guest House (Type A & Type B) | Guest House | | 289 |
| 2 | Pricipal's Residance | A-1 | | 325.3 |
| 3 | Faculty & Staff Quarters | Type A | | 1612 |
| | | Type B | | 1003.8 |
| | | Type C | | 501.9 |
| | | Type D | | 900 |
| | | Type E | | 2917.9 |

16. Boys Hostel :

The students have been provided hired hostel accommodation at the cost of Rs.3500-4000 per month that includes boarding and lodging. The Institutional hostel has capacity to accommodate 500 students.

16.(A) Girls Hostel :

The students have been provided hired hostel accommodation at the cost of Rs.3500-4000 per month that includes boarding and lodging. The Institutional hostel has capacity to accommodate 300 students.

17. Academic session : From July to June
Examination System : Semester wise
Period of declaration of Result : within 3 months after Examination

18. Counseling / mentoring:

Carrier Counseling:- Individual meeting of each student with Expert Counselor appointed by the Institute for Counseling, Course Information Service, Education Planning and Management, Development of Total Personality & Assessment of Human Potentiality .

Medical facilities:

The Institution has a medical room within the campus the medical facilities for the students are available round the clock in the campus itself.

Besides it a van operatable 24 hours is available in the campus for unforeseen emergencies. Separate first aid boxes have been engaged in the hostels and academic blocks for the time to time medical treatment of the students.

- Student Insurance : This Scheme will be started from the
Upcoming Academic session 2011-12

19. Student Activity body:

Cultural Activities:

The institute has set up various societies catering to the different types of extra curricular activities for the students who may want to participate in it. The Cultural Societies, Literary Society etc. have been formed so as to provide the students with an institutional support for developing their special skills culmination in a fuller expression of their personalities. Debates, Seminars, Rangoli Competitions, musical and cultural events etc. are also an integral component at the Institutes in addition to the studies.

Sports Activities:

A Stadium, Playgrounds and other infrastructure for the outdoor games i.e. basketball, volleyball, cricket and badminton are available in the campus. Apart from this, the facilities for indoor games are also available. The sports and athletics meet is held every year in the Campus.

Literary Activities:

The students of the college participate in various literary activities organized by different organizations. In the Parliamentary Quiz Competition, the students of the college have been the champion for the last three successive years. A number of awards have been bagged by the students in inter-college Essay competitions, Debate competitions and so on.

Magazine/News letters: Library facilitated with national and international Journals & Magazines.

Technical Activities : The Institute have following programmes for develop students Skills-

- Industrial/ Field visit for students
- Seminar/Symposia/ Technical paper sessions
- Personality development programmes
- Other academic and cultural programmes for students

Industrial Visit / Tour :

Industrial tour was organized for VI Sem. B.Tech (EE & ECE) students, escorted by four faculty members Ms.Kamini Gupta,Mr.Jainendra Sharma ,Mr.J.P.Vijay and Ms.sangeeta Shekhawat from 20/04/2009 to 26/04/2009.(Chandigarh and Manali)

.

INDUSTRIES VISITED IN THE ABOVE TOUR:

S.No Name of the Company Location

1. Synergy Telecommunication
2. Gopi Mixture Ltd.
3. Textile Industry Manali

Industrial tour was organized for VI Sem. B.Tech (CSE & IT) students, escorted by four faculty members Dr.Sushila Choudhary,Mr.Ramniwas, Mr.Deepak Yagnik & Mr.Vipin Kumar from 20/04/2009 to 26/04/2009.(Chandigarh and Manali)

.

INDUSTRIES VISITED IN THE ABOVE TOUR:

S.No Name of the Company Location

1. Synergy Telecommunication
2. Infosys Ltd. Chandigarh
3. Visiton

Industrial tour was organized for VI Sem. B.Tech (CSE & IT) students, escorted by four faculty members Dr.Sushila Choudhary,Mr.Ramniwas, Mr.Pakaj Maharia & Mr.Noor Mohammad from 16/10/2009 to 23/10/2009.(Chandigarh,Shimla and Manali)

INDUSTRIES VISITED IN THE ABOVE TOUR:

S.No Name of the Company Location

1. Synergy Telecommunication
2. Infosys Ltd. Chandigarh
- 3.Visiton

Alumina Activities :

The aims & objectives of Alumni Association, SEC, and Dundlod are to:

- ❖ Provide a forum to establish and maintain links between old students (Alumni), staff and students of SEC, Dundlod
- ❖ Enable the Alumni to participate in activities which would contribute to keep the identity of the college in which they studied and help in general development of the institute.
- ❖ Promote interaction and networking among Alumni to achieve their professional goals and share experiences in business, trades, education, training and culture.
- ❖ Foster cooperation and fellowship among its members.
- ❖ Bring them together to exchange nostalgic feelings, ideas, thoughts, new concepts in science and technology, advance management techniques and other useful information's.
- ❖ Keep the Alumni abreast of academic, scientific and technological developments of the institute.
- ❖ Institute prizes and scholarships and render financial help to the deserving students of the institute.
- ❖ Contribute to the welfare of the Alumni and the institute's vision of being recognized among the world's leading institutions in academics, research excellence, management study and innovations.

20. Name of the information officer for RTI : Shri Dinesh Ranwa
Designation : Managing Director
Phone No. : 01594-225375
(M)- +919929422221; +919414042206
Fax No. : 01594-225721; 01594-225375
Email : dir_secd@yahoo.in
md@secd.in

